





LOT 2  
N/F  
COROLLA SOUND SIDE L.L.C.  
(D.B. 820, PG. 793)

OCEAN TRAIL NC12  
100' RW

N/F  
DEVILS BAY  
R/W

N/F  
CURRITUCK COUNTY

- REFERENCE NOTES:**
- GREEN SPACE DELINEATION SHOWN HEREIN WILL SUPERSEDE PORTIONS OF THE EXHIBIT PLAT RECORDED IN THE PUBLIC RECORDS OF THE CURRITUCK COUNTY REGISTERED PLAT BOOK, PLAT NO. 117, DATED DECEMBER 12, 2006. SUBDIVISION PREPARED BY COASTAL ENGINEERING & SURVEYING, INC.
  - GREEN SPACE DELINEATION SHOWN HEREIN WILL SUPERSEDE PORTIONS OF REFERENCE PLAT TITLED, MONTERAY SHORES V.I.P. EXPANSION, REFERENCE THE WASTE WATER TREATMENT PLANT GREEN SPACE, SHEET PGS. 9- PREPARED BY ROBERT G. BIRGIN, JR. INC., DATED, DECEMBER 27, 2006.
  - PRELIMINARY UNIT VILLAS AT COROLLA BAY DEVELOPMENT COMPLETED
- DEVELOPER: COROLLA BAY DEVELOPMENT, L.L.C.  
 GREEN SPACE TALLY:  
 VILLA LOTS = 52,290.23 SF  
 VILLAS PERIMETER = 58,413.94 SF  
 NORTH HERRING ST = 4,797.20 SF  
 RESIDUAL AREA = 19,010 SF  
 PERIMETER STRIP = 35,257 SF  
 GRAND TOTAL = 169,768.37 SF  
 DR 389 ACS

**Coastal**  
ENGINEERING & SURVEYING, INC.

P.O. Box 1129  
4425 N. CROATAN HWY  
Kitty Hawk, N.C. 27949  
(252)-261-4151  
(252)-261-1333  
C-0836

Civil - Structural  
Site Development

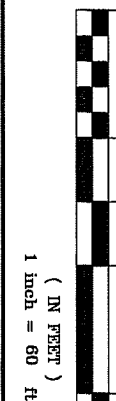
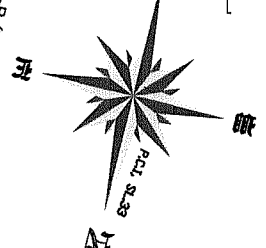
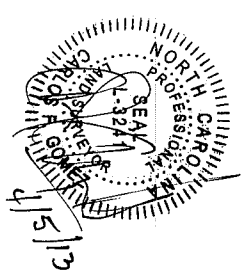
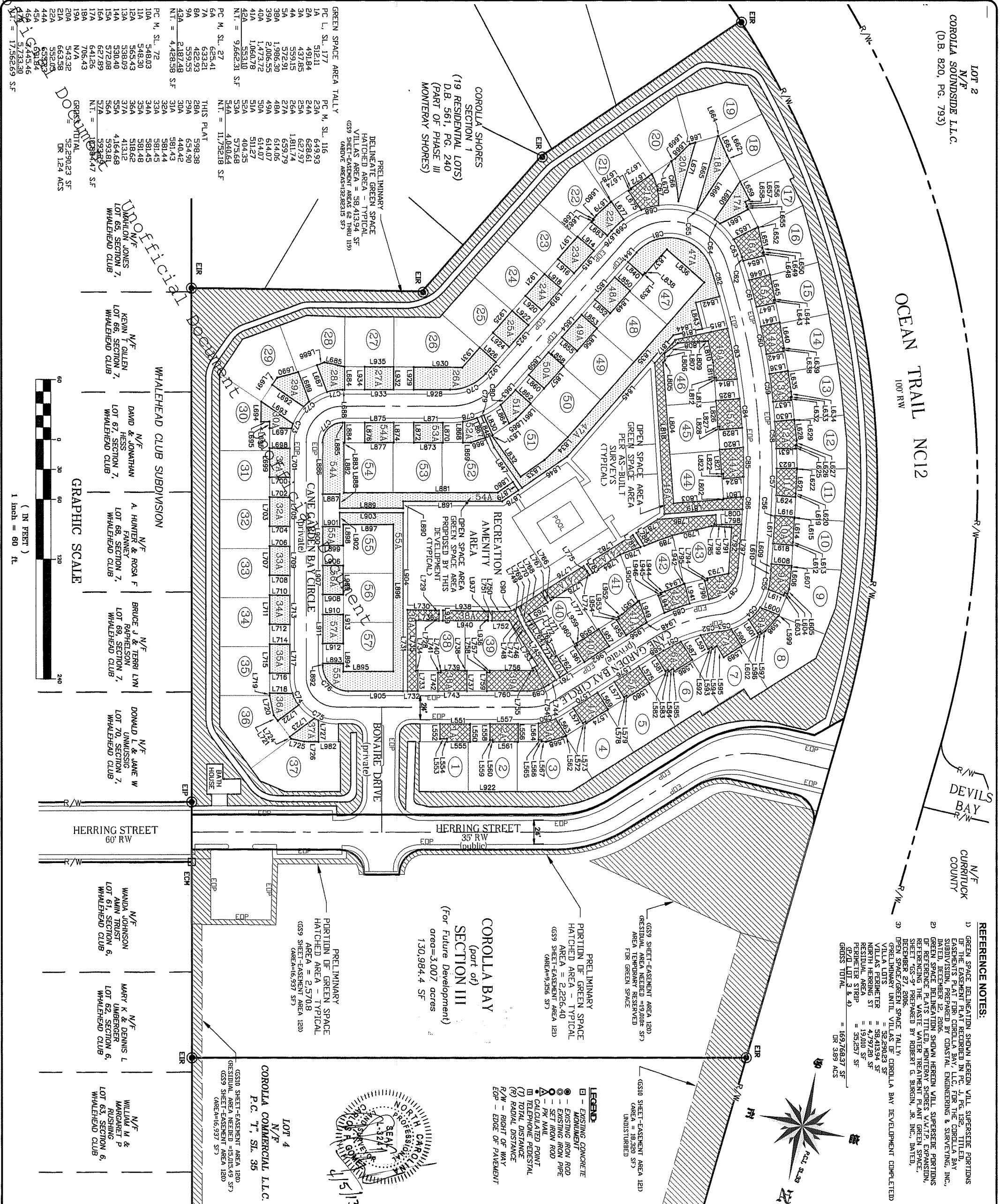
**REVISIONS**

NO.	DATE	DESCRIPTION	BY

MONTERAY SHORES P.U.D. PHASE III  
**COROLLA BAY - SECTION III**  
 POPLAR BRANCH TWP CURRITUCK COUNTY NORTH CAROLINA  
 FINAL PLAT, LOT'S 28-37 & 55-57 - VILLAS AT COROLLA BAY

CAD FILE: P558-FP  
 PRODUCT NO: P558  
 SHEET: 3 OF 4

DATE: 3/21/13  
 SCALE: 1"=60'  
 CHECKED: MMH  
 DRAWN: MMH



**GREEN SPACE AREA TALLY**

PC M. SL.	AREA	AREA
1A	312.11	649.93
2A	491.84	628.61
3A	437.85	629.24
4A	437.85	629.24
5A	437.85	629.24
6A	437.85	629.24
7A	437.85	629.24
8A	437.85	629.24
9A	437.85	629.24
10A	437.85	629.24
11A	437.85	629.24
12A	437.85	629.24
13A	437.85	629.24
14A	437.85	629.24
15A	437.85	629.24
16A	437.85	629.24
17A	437.85	629.24
18A	437.85	629.24
19A	437.85	629.24
20A	437.85	629.24
21A	437.85	629.24
22A	437.85	629.24
23A	437.85	629.24
24A	437.85	629.24
25A	437.85	629.24
26A	437.85	629.24
27A	437.85	629.24
28A	437.85	629.24
29A	437.85	629.24
30A	437.85	629.24
31A	437.85	629.24
32A	437.85	629.24
33A	437.85	629.24
34A	437.85	629.24
35A	437.85	629.24
36A	437.85	629.24
37A	437.85	629.24
38A	437.85	629.24
39A	437.85	629.24
40A	437.85	629.24
41A	437.85	629.24
42A	437.85	629.24
43A	437.85	629.24
44A	437.85	629.24
45A	437.85	629.24
46A	437.85	629.24
47A	437.85	629.24
48A	437.85	629.24
49A	437.85	629.24
50A	437.85	629.24
51A	437.85	629.24
52A	437.85	629.24
53A	437.85	629.24
54A	437.85	629.24
55A	437.85	629.24
56A	437.85	629.24
57A	437.85	629.24
58A	437.85	629.24
59A	437.85	629.24
60A	437.85	629.24
61A	437.85	629.24
62A	437.85	629.24
63A	437.85	629.24
64A	437.85	629.24
65A	437.85	629.24
66A	437.85	629.24
67A	437.85	629.24
68A	437.85	629.24
69A	437.85	629.24
70A	437.85	629.24
71A	437.85	629.24
72A	437.85	629.24
73A	437.85	629.24
74A	437.85	629.24
75A	437.85	629.24
76A	437.85	629.24
77A	437.85	629.24
78A	437.85	629.24
79A	437.85	629.24
80A	437.85	629.24
81A	437.85	629.24
82A	437.85	629.24
83A	437.85	629.24
84A	437.85	629.24
85A	437.85	629.24
86A	437.85	629.24
87A	437.85	629.24
88A	437.85	629.24
89A	437.85	629.24
90A	437.85	629.24
91A	437.85	629.24
92A	437.85	629.24
93A	437.85	629.24
94A	437.85	629.24
95A	437.85	629.24
96A	437.85	629.24
97A	437.85	629.24
98A	437.85	629.24
99A	437.85	629.24
100A	437.85	629.24

**PRELIMINARY HATCHED AREA - TYPICAL**  
 GREEN SPACE AREA = 38,413.94 SF  
 (CS9 SHEET-EASEMENT AREA 120)  
 (AREA=16,937 SF)

**PRELIMINARY HATCHED AREA - TYPICAL**  
 GREEN SPACE AREA = 19,010  
 (CS9 SHEET-EASEMENT AREA 120)  
 (AREA=16,937 SF)

**PRELIMINARY HATCHED AREA - TYPICAL**  
 GREEN SPACE AREA = 2,570.8  
 (CS9 SHEET-EASEMENT AREA 120)  
 (AREA=16,937 SF)

**THIS PLAT**

PC M. SL.	AREA	AREA
1A	312.11	649.93
2A	491.84	628.61
3A	437.85	629.24
4A	437.85	629.24
5A	437.85	629.24
6A	437.85	629.24
7A	437.85	629.24
8A	437.85	629.24
9A	437.85	629.24
10A	437.85	629.24
11A	437.85	629.24
12A	437.85	629.24
13A	437.85	629.24
14A	437.85	629.24
15A	437.85	629.24
16A	437.85	629.24
17A	437.85	629.24
18A	437.85	629.24
19A	437.85	629.24
20A	437.85	629.24
21A	437.85	629.24
22A	437.85	629.24
23A	437.85	629.24
24A	437.85	629.24
25A	437.85	629.24
26A	437.85	629.24
27A	437.85	629.24
28A	437.85	629.24
29A	437.85	629.24
30A	437.85	629.24
31A	437.85	629.24
32A	437.85	629.24
33A	437.85	629.24
34A	437.85	629.24
35A	437.85	629.24
36A	437.85	629.24
37A	437.85	629.24
38A	437.85	629.24
39A	437.85	629.24
40A	437.85	629.24
41A	437.85	629.24
42A	437.85	629.24
43A	437.85	629.24
44A	437.85	629.24
45A	437.85	629.24
46A	437.85	6

